



KEY FEATURES

- This bi-fold swivel operator throws locking stainless steel bolts into the frame at top and bottom of the panel. Optional key-locking (separately installed) is available. Available in 316-grade stainless steel and painted finish.
- Having an operator handle located centrally on a bi-fold door removes the need to bend down or stretch to reach flush bolts that might be located at the top and bottom of the stiles.
- The ANDO™ handle is clean and smooth with no visible fasteners when is in the closed position.
- Available in a range of standard and special powdercoat finishes to match your door.
- Also available in 316 grade stainless steel.
- Low line furniture (15mm) ensures the handle won't strike adjoining panels when doors are in the open position.
- Handle has ball detent to keep the handle at 90° (in the unlock position) when opening panels.
- Matching hinged door lever furniture available.



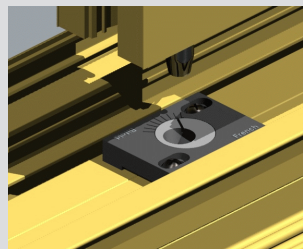
FINISHING

ANDO™ bi-fold operator can be supplied non-key locking. The furniture is available in a range of standard or special colours.



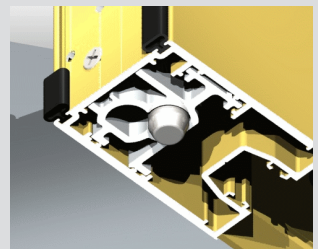
KEY LOCK

ANDO™ bi-fold operator can also be supplied in a key locking format.



ADJUSTABLE

On Series 410 Bi-fold doors the keeper in head and sill is adjustable. This allows the panels to be tightened on the frame.



SUPPORT

The bolt tips are supported by extruded aluminium guides. This ensures the bolts fall in the right location and that they can withstand high wind loads

DIMENSIONS

Height	143mm
Width	27mm
Depth	15mm

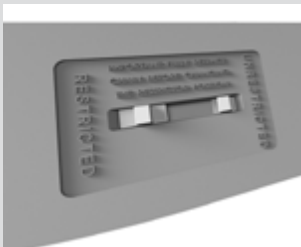
SUITABLE FOR USE WITH

-  Series 546 Designer Bi-fold Window
-  Series 548 Designer Bi-fold Door
-  Series 730 ThermalHEART® Bi-fold Door
-  Series 410 FoldMASTER™ Bi-fold Door
-  Series 411 ViewMASTER™ Bi-fold Door
-  Series 412 ViewMASTER™ Bi-fold Door



KEY FEATURES

- ANDO™ manual chain winders come in a large range of standard and special powder coat finishes.
- The corrosion resisting stainless steel chain and Polesium™ winder base protect not only the winder but also the window sash and sill. If a winder should corrode the window will almost certainly be damaged.
- Chain winder can be key locked.
- Chain winder control knob can be folded down.
- The length of the chain can be reduced on heavy sashes. This reduces the chance of damaging the projecting chain under high wind loads when sash is in the open position.
- Winder fixed to reinforced (thickened) sections on sash and frame to ensure fixing screws don't come loose.
- Winder designed to suit flyscreening.
- Available in a range of standard and special powdercoat finishes to match your window.



CHAIN RESTRICTION SWITCH

Inbuilt restriction switch to easily restrict chain length where window restriction is required.



ERGONOMIC FOLD DOWN HANDLE

Designed to compliment the shape of the winder. Simply pull to fold down.



LOCK INDICATOR & 6 DISC CYLINDER

Allows you to clearly see if the winder is in the locked or unlocked position.

Can be keyed alike.



EASYLINK ATTACHABLE SASH PLATE

Easylink is a simple one way fitment to simplify Chainwinder installation. Increases efficiency by reducing installation time.

DIMENSIONS

Height	50mm
Width	280mm
Depth	50mm

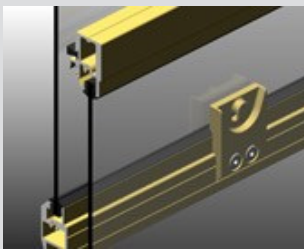
SUITABLE FOR USE WITH

- Series 516 Residential Awning Window
- Series 517 Residential Awning Window
- Series 616 Designer Awning Window
- Series 726 ThermalHEART® Awning Window
- Series 456 Commercial Awning Window
- Series 466 Architectural Awning Window



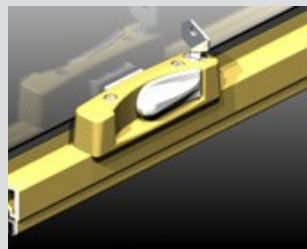
KEY FEATURES

- The ANDO™ Double Hung Lock incorporates a clean roll-over handle that won't clash with Curtains and/or drapes.
- The lock can be keyed to match other ANDO™ window locks.
- Styling is consistent with ANDO™ products for aesthetic consistency within your home, chrome plated turn knob matches other ANDO™ products.
- Heavy duty die cast keeper designed to match the cam.
- Available in a range of standard and special powdercoat finishes to match your window.



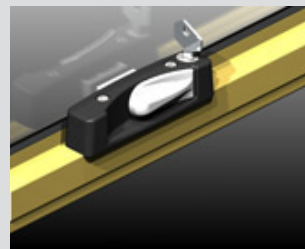
HEAVY DUTY

Heavy duty die cast keeper designed to match the cam.



EASE OF USE

The large chrome turn snib on the cam is designed for ease of operation particularly those with reduced dexterity.



FINISHING

Lock body can be coloured to match sash.

DIMENSIONS

Height	30mm
Width	115mm
Depth	30mm

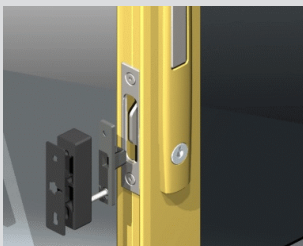
SUITABLE FOR USE WITH

- Series 514 Residential Double Hung Window
- Series 613 Designer Double Hung Window
- Series 453 Commercial Double Hung Window
- Series 463 Architectural Double Hung Window



KEY FEATURES

- Compact streamlined window lock with recessed finger grab for neat, flush finish.
- Neat low profile appearance.
- Available in a range of standard and special powdercoat finishes to match your window.
- Chrome handle to match to match ANDO™ styling.
- Designed for use with Vantage Residential Designer series or Elevate™ Commercial Architectural series.
- Push handle tab into body to slide window open. Turn key to lock.



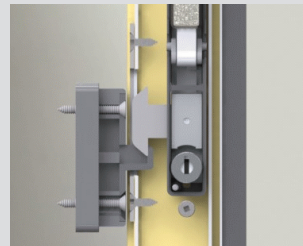
EASE OF USE

ANDO™ Sliding Window mortice lock is easily opened by depressing the push button. To lock depress the pull handle. Key lockable.



FINISHING

Sliding Window mortice lock can be supplied in a range of standard and special powder coat finishes to match the window framing.



SECURITY

Mortice lock is securely fixed to window stile.

DIMENSIONS

Height	190mm
Width	26mm
Depth	7mm

SUITABLE FOR USE WITH

- Series 601 Designer Sliding Window
- Series 602 Designer Sliding Window
- Series 461 Apartment Sliding Window
- Series 462 Architectural Sliding Window
- Series 662 Architectural Sliding Window 150mm



KEY FEATURES

- A clean compact lever handle with up to three point locking. Turning the key activates locking rods at top and bottom of the door. Available in 316-grade stainless steel and painted finish.
- Single or multi-point locking options.
- Stainless steel furniture option.
- Available in a range of standard and special powdercoat finishes to match your door.



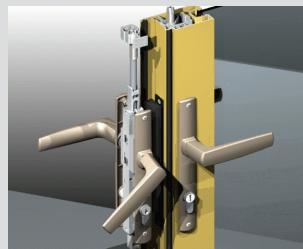
FINISHING

ANDO™ pulls are fitted both sides of the stile. Designed to suit our architectural and commercial sliding doors.



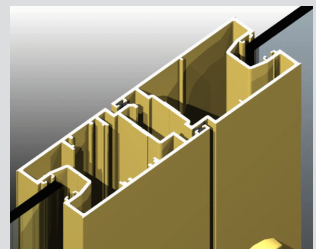
SNIB KEYS

ANDO™ pulls available in 316 grade stainless steel or powder coat over stainless steel. Designed for use with commercial sliding door locks.



DUMMY LOCK

We have designed custom injection moulded nylon spacers to position the spring loaded lock keeper in the right location.



MULTI-POINT LOCK

The image above shows the shoot bolts on non-thermal commercial doors fitted with multi-point locks.

DIMENSIONS

Height	215mm
Width	125mm
Depth	55mm

SUITABLE FOR USE WITH

- Series 549 Residential Entry Door
- Series 548 Designer Bi-fold Door
- Series 548 Designer Hinged Door
- Series 729 ThermalHEART® Hinged Door
- Series 730 ThermalHEART® Bi-fold Door
- Series 410 FoldMASTER™ Bi-fold Door

- Series 411 ViewMASTER™ Bi-fold Door
- Series 412 ViewMASTER™ Bi-fold Door
- Series 650 Architectural Hinged Door



KEY FEATURES

- Sleek, minimalist handle design in keeping with ANDO™ hardware styling.
- Latch and deadlock all in one standard model offering flexible security options.
- Polesium™ internal handle, stainless steel external handle offer high resistance to corrosion in aggressive environments such as sea fronts without compromising security.
- Symmetrical handle design. An important feature with four lite doors where locks meet and can be used for both left and right handed applications.
- Can be keyed alike to other ANDO™ window and door locks.
- Available in a range of standard and special powdercoat finishes to match your door.



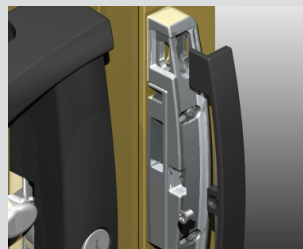
FINISHING

ANDO™ Sliding Door lock can be supplied in a range of standard and special powder coat finishes to match the door framing.



SECURITY

The outer pull is powder coated over stainless steel for improved security and longevity.



ADJUSTABLE

The ANDO™ lock keeper is chrome plated zinc die cast with colour matched cover. The keeper is adjustable up, down and sideways.

DIMENSIONS

Height	210mm
Width	100mm
Depth	40mm

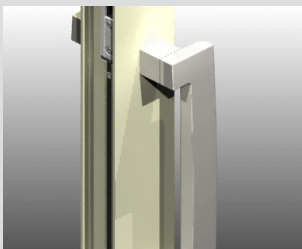
SUITABLE FOR USE WITH

- Series 541 Residential Sliding Door
- Series 542 Residential Sliding Door
- Series 618 MAGNUM™ Sliding Door
- Series 471 Apartment Sliding Door



KEY FEATURES

- This elegant D-Pull handle is designed to offer a sleek, contemporary alternative to surface mounted sliding door locks.
- Designed to be used in conjunction with a Mortice lock to deliver a secure, functional and elegant solution.
- Manufactured from 316-grade stainless steel for exceptional corrosion resistance.
- Available natural stainless steel finish or a range of standard and special powdercoat finishes to match your door.



ARCHITECTURAL DESIGN

ANDO™ pulls are fitted both sides of the stile. Designed to suit our architectural and commercial sliding doors.



FINISHING

ANDO™ pulls available in 316 grade stainless steel or powder coat over stainless steel. Designed for use with commercial sliding door locks.







CUSTOM DESIGN

We have designed custom injection moulded nylon spacers to position the spring loaded lock keeper in the right location.

DIMENSIONS

Height	236mm
Width	66.5mm
Depth	40mm

SUITABLE FOR USE WITH

-  Series 618 MAGNUM™ Sliding Door
-  Series 731 ThermalHEART® Sliding Door
-  Series 702 SlideMASTER™ Sliding Door
-  Series 704 SlideMASTER™ Sliding Door



KEY FEATURES

- The ANDO™ slimline sliding door lock incorporates a twin actuated locking mechanism with dual 316-grade stainless steel locking tongues.
- There is no lever or D-pull to protrude over the glass, ensuring clean lines and a sleek appearance.
- Heavy duty stainless steel tongues.
- Available in a range of standard and special powdercoat finishes to match your door.
- Slim elegant design.



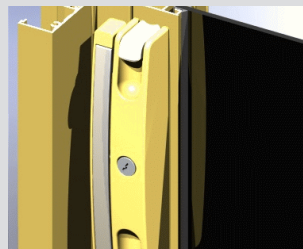
FINISHING

ANDO™ Slimline Sliding Door lock can be supplied in a range of standard and special powder coat finishes to match the door framing.



ADJUSTABLE

The twin locking stainless steel tongues nest into matching adjustable keeper.









SCREENING

When used in the Series 471 Apartment door the ANDO™ slimline clears the screen door.

DIMENSIONS

Height	210mm
Width	105mm
Depth	44mm

SUITABLE FOR USE WITH

-  Series 541 Residential Sliding Door
-  Series 542 Residential Sliding Door
-  Series 618 MAGNUM™ Sliding Door
-  Series 471 Apartment Sliding Door
-  Series 702 SlideMASTER™ Sliding Door
-  Series 704 SlideMASTER™ Sliding Door



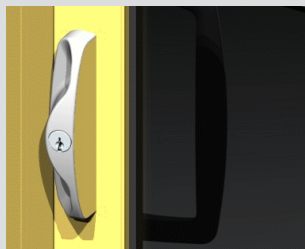
KEY FEATURES

- This powerful square form handle surface mounts to the door.
- The handle incorporates a twin actuated locking mechanism with dual 316-grade stainless steel locking tongues.
- Twin point locking.
- Heavy duty stainless steel tongues.
- Available in a range of standard and special powdercoat finishes to match your door.
- Stainless steel handle option available.



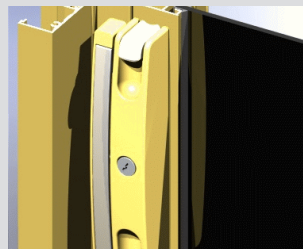
TWIN LOCKING

Twin locking stainless steel tongues that nest into matching adjustable keeper. Covers can be supplied powdercoat or stainless steel.



STRENGTH

The outer pull on ANDO™ locks is powder coated over stainless steel. This significantly increases the strengths and weather resistance.








FLYSCREEN

When used in the Series 471 Apartment door fitted with flydoors we recommend ANDO™ slimline as it clears the screen door.

DIMENSIONS

Height	210mm
Width	105mm
Depth	44mm

SUITABLE FOR USE WITH

-  Series 541 Residential Sliding Door
-  Series 542 Residential Sliding Door
-  Series 618 MAGNUM™ Sliding Door
-  Series 471 Apartment Sliding Door
-  Series 702 SlideMASTER™ Sliding Door
-  Series 704 SlideMASTER™ Sliding Door